

RESEARCH ARTICLE

Circulating Inflammatory Mediators as Potential Prognostic Markers of Human Colorectal Cancer

Giuseppe Di Caro^{1,3*}, Michele Carvello², Samantha Pesce¹, Marco Erreni¹, Federica Marchesi¹, Jelena Todoric³, Matteo Sacchi², Marco Montorsi², Paola Allavena¹, Antonino Spinelli^{2*}

1 Department of Immunology and Inflammation, Humanitas Clinical and Research Center, Rozzano, Milan, Italy, **2** Department of Colon and Rectal Surgery, Humanitas Clinical and Research Center, Rozzano, Milan, Italy, **3** Laboratory of Gene Regulation and Signal Transduction, Departments of Pharmacology and Pathology, School of Medicine, University of California San Diego, La Jolla, California, United States of America

* gdicaro@ucsd.edu (GDC); Antonino.spinelli@humanitas.it (AS)



CrossMark
click for updates

OPEN ACCESS

Citation: Di Caro G, Carvello M, Pesce S, Erreni M, Marchesi F, Todoric J, et al. (2016) Circulating Inflammatory Mediators as Potential Prognostic Markers of Human Colorectal Cancer. PLoS ONE 11 (2): e0148186. doi:10.1371/journal.pone.0148186

Editor: Ken-ichi Mukaisho, Shiga University of Medical science, JAPAN

Received: September 21, 2015

Accepted: January 14, 2016

Published: February 9, 2016

Copyright: © 2016 Di Caro et al. This is an open access article distributed under the terms of the [Creative Commons Attribution License](https://creativecommons.org/licenses/by/4.0/), which permits unrestricted use, distribution, and reproduction in any medium, provided the original author and source are credited.

Data Availability Statement: All relevant data are within the paper and its Supporting Information file.

Funding: The work was supported by 16230 Associazione Italiana per la ricerca sul cancro to GDC. The funder had no role in study design, data collection and analysis, decision to publish, or preparation of the manuscript.

Competing Interests: The authors have declared that no competing interests exist.

Abstract

Background

Cytokines and chemokines in the tumor microenvironment drive metastatic development and their serum levels might mirror the ongoing inflammatory reaction at the tumor site. Novel highly sensitive tools are needed to identify colorectal cancer patients at high risk of recurrence that should be more closely monitored during post-surgical follow up. Here we study whether circulating inflammatory markers might be used to predict recurrence in CRC patients.

Methods

Circulating levels of the inflammatory cytokines IL-1, IL-6, IL-10, TNFalpha, CCL2, CXCL8, VEGF and the acute phase protein Pentraxin-3 were measured by ELISA in preoperative serum samples prospectively collected from a cohort of sixty-nine patients undergoing surgical resection for stage 0–IV CRC and associated with post-operative disease recurrence.

Results

Cox multivariate analysis showed that combined high levels (\geq ROC cut off-value) of CXCL8, VEGF and Pentraxin3 were associated with increased risk of disease recurrence [HR: 14.28; 95%CI: (3.13–65.1)] independently of TNM staging. Kaplan-Meier analysis showed that CXCL8, VEGF and Pentraxin3 levels were significantly associated with worse survival ($P < 0.001$).

Conclusions

Circulating inflammatory mediators efficiently predicted postoperative recurrence after CRC surgery. Therefore, this study suggest that their validation in large-scale clinical trials may help in tailoring CRC post-surgical management.

Introduction

Colorectal cancer (CRC) is a leading cause of cancer death in developed countries [1]. Despite advances in diagnostic tests and surgical procedures that usually have curative intent, about half of patients undergoing surgery for CRC with curative intent will experience metachronous metastasis and consequent death [2]. To date pathological Nodal Metastasis Tumor System (TNM) staging remains the benchmark for the prediction of CRC patients who will experience disease progression, despite the core of the original Dukes system [3] is substantially unchanged. In fact, histopathological staging lacks accuracy and an important percentage of patients at greatest risk for disease recurrence are still not detected with this methodology [2] [4]. Novel prognostic biomarkers of CRC would allow identification of subgroup of patients with high risk of tumor relapse that should be considered for frequent surveillance, diagnostic screening and therapeutic intervention.

It has been well established that inflammatory cells in the tumor microenvironment release inflammatory mediators that in turn activate local immune networks to promote development and growth of malignant cells by increasing their proliferation and survival as well as angiogenesis [5] [6] [7–9]. Besides, inflammatory mediators, i.e. chemokines together with angiogenic factors are a trigger for the development of invasive abilities as they increase tumor cells motility and migration that ultimately results in metastatic occurrence [8]. The interconnection between inflammation and angiogenesis is explained by the ability of VEGF and chemokine such as CCL2 and CXCL8 to recruit leukocytes at the tumor site that in turn produce VEGF and inflammatory mediators and thus amplify tumorigenic signal via an autocrine and paracrine loop [8]. Chemokines and cytokines are extensively produced in the tumor microenvironment regardless of the initial triggers [8] and mediators such as IL-1b, TNF α and IL-6 directly promoted the tumor progression in experimental models of colorectal cancer [8, 10].

Inflammatory mediators detected in the serum of patients might mirror the ongoing inflammatory reaction at the tumor site. Consistently, population-based studies showed that individuals with high circulating levels of inflammatory mediators are at greater risk for developing CRC [11] [12, 13]. Thus, serum levels of these markers have the potential to become a paradigm as non-invasive diagnostic tests for the detection of CRC patients [14]. However, few studies on this issue assessed the ability of circulating inflammatory mediators to identify patients who will develop postsurgical recurrences and metachronous metastasis with respect to current clinical prognostic tools for CRC [15–17]. Therefore, well designed prospective studies are needed to better establish their clinical relevance.

In this study, we prospectively sampled preoperative plasma of CRC patients undergoing surgical treatment at our Institution and we assessed whether the levels of cytokines and chemokines represented by IL-1, IL-6, IL-10, TNF α , CCL2, CXCL8, VEGF and the acute phase protein Pentraxin-3 might be associated with postoperative disease recurrence in a 5-year follow-up study.

Material and Methods

Patient's enrollment and study design

69 patients who were diagnosed with colorectal tumor, and consecutively underwent radical surgery in Humanitas Research hospital with curative intent between April 2008 and August 2009 were included in this study. After patient gave informed consent to the investigation, a blood sample from each patient was withdrawn at the time of hospital admission and before surgery to be processed for plasma separation. Investigators who were blinded to the results of the levels of immune parameters assembled a clinical database by collecting patients'

demographics, clinical and histopathological data that were recorded on the Institutional's Intranet server. Tumor clinical and histopathologic staging at diagnosis was determined in all patients by combining histopathologic findings with surgical records and perioperative imaging. Tumor staging was categorized according to the American Joint Committee on Cancer AJCC guidelines. All the patient's demographics, clinical and histopathological variables were tested for covariance with levels of immune mediators (Table 1). These variables, together with the amount of IL-1, IL-6, IL-10, TNFalpha, CCL2, CXCL8, VEGF and of the acute phase protein Pentraxin-3, were tested as predictors of patient's outcome, to evaluate the likelihood of tumor relapses with respect to the extent of blood levels of immune mediators. We defined the outcome of CRC patients as a variable including any event ($n = 9$) of local tumor recurrences ($n = 1$) or any metachronous distant-organ metastases ($n = 8$), which is named disease free survival (DFS). The survival of patients was calculated as disease specific survival (DSS) and concerned any death related only to CRC disease ($n = 5$). To detect or exclude any postsurgical tumor recurrences, patients underwent thoraco-abdominal computed-tomography, abdominal ultrasonography, and chest radiography that were done according to common protocols for surveillance. The observation period started immediately after the surgical procedure and the detection of tumor recurrence or tumor related death was computed from diagnosis until data were censored. The mean follow-up period of the cohort studied was 56.33 months ($SD = 15.74$ months). If the death event was unrelated to CRC disease, time to follow-up was stopped at the time of patient's death which was not considered an event of outcome. Postsurgical tumor surveillance follow up data have not been available in 6 out of 69 patients (8.7%) enrolled in the study and were therefore excluded from the outcome analysis according to previous guidelines [18]. Ethics Committee of the Humanitas Clinical and Research Center approved the study, and the referring physician obtained written informed consent from each patient prior to surgery.

Assays

Plasma samples were centrifuged at 3000 rpm for 10 minutes and then kept at -80°C until ELISA assessment. Plasma levels of IL-1, IL-6, IL-10, TNFalpha, CCL2, CXCL8, VEGF were determined by commercially available sandwich enzyme-linked immunosorbent assay (ELISA) kit according to the manufacturer's instructions. PTX3 in plasma was assayed with an "in house" sandwich ELISA based on the monoclonal antibody MNB4 (capture antibody) and rabbit anti-serum (detection antibody) as previously described [19]. The detection limit is 100 pg/ml and interassay variability is 8%-10%. Normal values of PTX3 are <2 ng/mL. The immune mediators levels in the patients plasma samples were determined by correlating each value duplicates to a standard curve based on a 2-fold serial dilution of recombinant IL-1, IL-6, IL-10, TNFalpha, CCL2, CXCL8, VEGF and PTX3 with known concentration.

Statistical analysis

Statistical analysis was performed using Epi Info (Version 3.4.3), StatsDirect Statistical software (Version 2.5) and GraphPad Prism software (Version 4.1). The association between immune mediator values and patient's baseline demographics, clinical and histopathological characteristics and tumor features were estimated by linear regression analysis. To best determine the association of each immune mediator and patient's prognosis, a receiver operational curve (ROC) analysis was performed. The ROC cut-off value of each continuous distribution was defined to predict the occurrence of patient's relapses. A Cox proportional hazard model was developed to assess the ROC cut off value of IL-1, IL-6, IL-10, TNFalpha, CCL2, CXCL8, VEGF and PTX3 and other demographic, clinical and histopathological features, in predicting

Table 1. IL-1, IL-6, CXCL8, IL10, CCL2, PTX-3, TNF-a and VEGF values in 69 stage 0-IV CRC patients according to demographics and histopathological features.

	N (%)	Median values							
		IL-1	IL-6	CXCL8	IL10	CCL2	PTX-3	TNF-a	VEGF
All cases	69 (100)								
Age									
< 70 yrs.	26	0.52	4.69	7.19	5.77	38.41	5.69	13.04	37.59
≥ 70 yrs.	43	0.40	5.86	6.64	5.60	38.81	7.00	10.89	31.92
Gender									
Male	35	0.47	6.60	6.98	5.19	40.08	5.76	10.34	37.82
Female	34	0.48	4.95	6.49	6.00	37.12	6.40	11.69	29.33
TNM staging									
0-I-II	40	0.44	5.25	5.92	5.31	40.52	5.95	11.17	29.33
III	24	0.40	5.71	6.82	5.84	38.23	6.92	10.47	39.15
IV	4	1.32 ^a	12.81	11.48	30.83	40.99	5.02	18.20	106.17 ^a
Tumor site									
Colon	56	0.46	5.57	6.66	5.84	38.36	6.33	10.98	34.67
Rectum	13	0.54	5.86	6.79	4.14	42.13	5.13	11.54	30.78
CEA									
<5ng/ml	42	0.32	4.24	6.79	5.08	38.31	6.20	9.93	31.97
≥5ng/ml	14	1.18 ^a	9.16	10.57	6.35	43.20	8.37	16.14 ^a	54.48

Mann Whitney analysis, IL-1, IL-6, CXCL8, IL10, CCL2, PTX-3, TNF-a and VEGF values were entered as dependent continuous variables.

^a P<0.05

doi:10.1371/journal.pone.0148186.t001

the occurrence of DFS. To assess for confounders, Cox multivariate analysis was performed by entering all the variables with a P value less than 0.20 at univariate analysis. By a backward stepwise elimination approach, non-significant variables and their non-significant interactions, were removed from the model. Kaplan-Meier curves of DSS were plotted, while log-rank test was used to compare the curves of each subgroup of CRC patients. For each test only two-sided P values lower than 0.05 were considered statistically significant.

Results

Demographics and histopathological features of CRC patients included in this study and their correlation with quantitative assessment of the preoperative plasma values of immune mediators are shown in [Table 1](#). Subgroup analysis revealed that among all the immune mediators only IL-1b and VEGF values slightly increased in advanced TNM staging (P = 0.06 and P = 0.04, respectively) ([Table 1](#)). Interestingly, only IL-1b and TNFa values increased among patients with high CEA blood levels (≥5ng/ml) at the cut-off generally employed for this biomarker, while other immune mediators were not associated with CEA levels ([Table 1](#)). Next, we tested the linear correlation coefficients among continuous plasma values of inflammatory markers as shown in [Table 2](#). Linear regression analysis revealed that IL-1b correlated at a great extent with TNF-a (r = 0.94, P<0.001) independently of other immune mediators ([Table 2](#)). In addition, CXCL8 values independently linearly correlated with those of IL-6, CCL2 and VEGF (r = 0.34, P = 0.006; r = 0.31 P = 0.01; r = 0.36 P = 0.003, respectively), while IL-10 values linearly correlated only with those of VEGF (r = 0.39, P<0.001) independently of the other immune markers ([Table 1](#)). Interestingly, the acute phase protein PTX3 levels did not

Table 2. Multiple regression analysis of IL-1, IL-6, CXCL8, IL10, CCL2, PTX-3, TNF-a and VEGF values in 69 stage 0-IV CRC patients.

Cytokines	IL-1 ^a	IL-6 ^a	CXCL8 ^a	IL-10 ^a	CCL2 ^a	PTX-3 ^a	TNF-a ^a	VEGF ^a
IL-1								
r ^b	-							
P	-							
IL-6								
r ^b	0.15	-						
P	0.23	-						
CXCL8								
r ^b	0.03	0.34	-					
P	0.79	0.006	-					
IL-10								
r ^b	-0.01	0.06	-0.11	-				
P	0.89	0.61	0.36	-				
CCL2								
r ^b	-0.14	0.18	0.31	-0.01	-			
P	0.25	0.14	0.01	0.99	-			
PTX-3								
r ^b	0.10	0.19	0.11	0.06	-0.06	-		
P	0.41	0.13	0.36	0.60	0.63	-		
TNF-a								
r ^b	0.94	-0.05	-0.11	0.07	0.22	-0.12	-	
P	<0.001	0.68	0.38	0.57	0.08	0.33	-	
VEGF								
r ^b	0.11	-0.02	0.36	0.39	-0.05	-0.03	-0.10	-
P	0.36	0.88	0.003	0.001	0.64	0.81	0.43	-

^a Multiple linear regression analysis model. Continuous values of IL-1, IL-6, CXCL8, IL10, CCL2, PTX-3, TNF-a and VEGF were entered as dependent continuous variables.

^b r = Correlation coefficient.

doi:10.1371/journal.pone.0148186.t002

correlate with any of the immune markers studied (Table 1), suggesting that PTX3 might follow different pathways of activation in CRC patients compared to other immune mediators.

Subsequently, we investigated the connection between baseline (preoperative) plasma levels of immune mediators and the risk to develop postsurgical CRC recurrences. Continuous distributions of patient’s plasma levels of circulating inflammatory mediators according to postsurgical CRC disease recurrence are shown in Fig 1. We found that patients who did not relapsed (n = 54) had significantly lower plasma concentrations of IL-1 (P = 0.008), IL-6 (P = 0.01), IL-10 (P = 0.04), CXCL8 (P ≤ 0.001), VEGF (P ≤ 0.001) and TNFalpha (P = 0.02) compared to those who experienced recurrence of CRC disease (n = 9) (Fig 1). In contrast, CCL2 values did not change according to the prognosis of CRC patients and the acute phase protein Pentraxin-3 had only a tendency to increase (P = 0.11) among those patients who experienced postsurgical disease recurrence (Fig 1).

Consistent with prior studies [20], to obtain a reproducible and reliable method to benchmark the prognostic values of biomarkers, we calculated ROC curves for each immune markers for CRC patients who had good prognosis (n = 54) versus those who experienced recurrence of disease (n = 9) at follow up (S1 Fig). ROC plot model analysis revealed inflammatory mediators with better sensitivity than specificity such as IL-1b (0.88 and 0.68), IL-6 (0.88 and 0.59), IL-10 (1 and 0.40), TNF-a (1 and 0.05), CCL2 (0.77 and 0.5), CXCL8 (1 and 0.64) and VEGF: (1 and

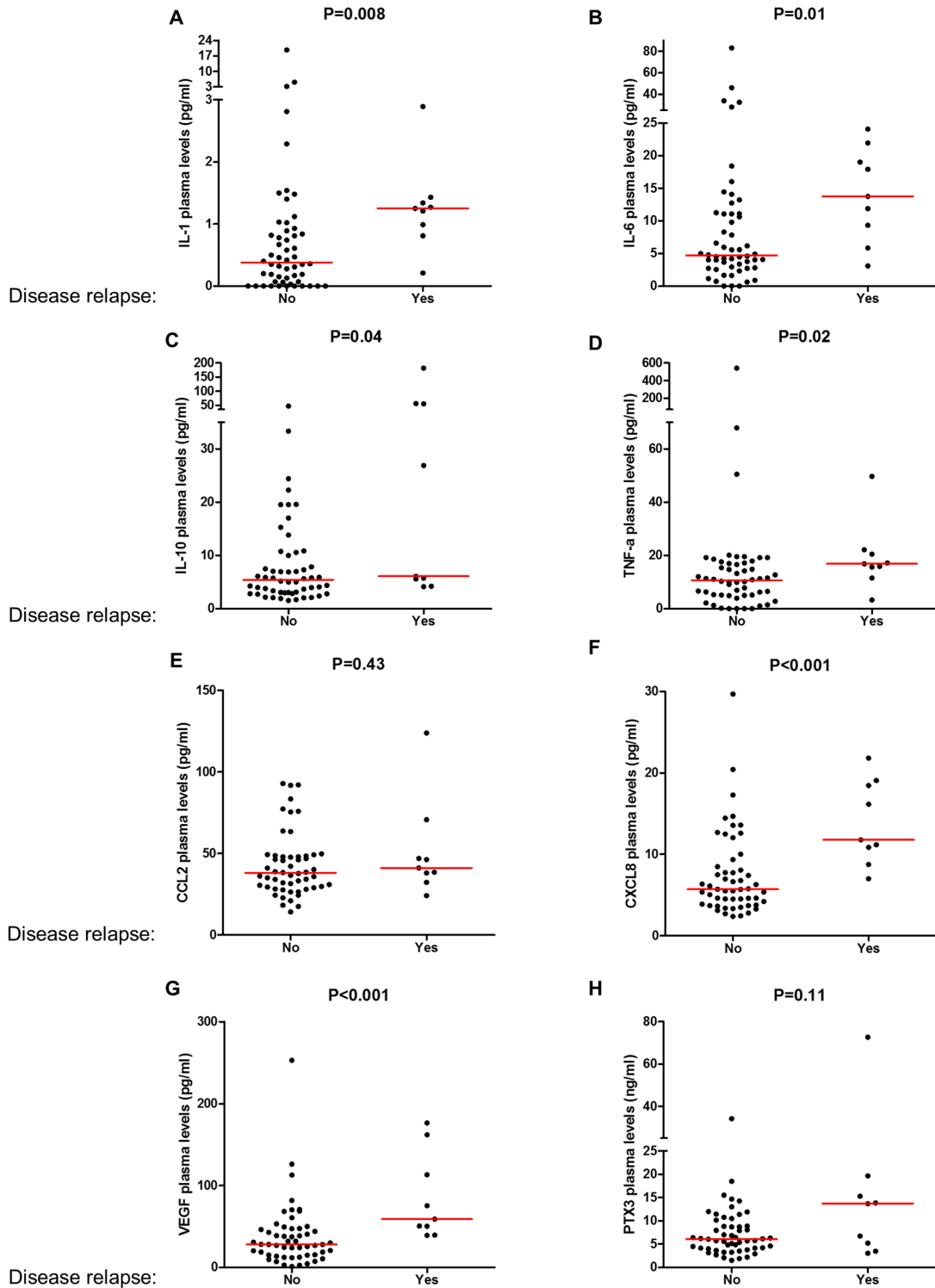


Fig 1. Continuous values of IL-1, IL-6, IL-10, TNF- α , CCL2, CXCL8, VEGF and the acute phase protein Pentraxin-3 in the plasma of colorectal cancers according to the occurrence of postsurgical relapse. The amount of IL-1 (A), IL-6 (B), IL-10 (C), TNF- α (D), IL-8 (F), VEGF (G) significantly increased in patients who experienced disease relapse, while the acute phase protein Pentraxin-3 (H) showed a tendency to associate with worse prognosis. CCL2 (E) levels were not associated with disease relapse.

doi:10.1371/journal.pone.0148186.g001

0.66) at the optimum cutoffs identified by the model (S1 Fig), while PTX-3 had higher specificity than sensitivity (0.55 and 0.90) (S1 Fig). To improve our understanding of the prognostic relevance of immune mediators, we designed a Cox univariate prognostic model (Table 2) based on the threshold values identified by the ROC curve for each inflammatory marker. In this model, CRC patients who had higher plasma levels (\geq ROC value) of IL-1 ($P = 0.01$), CXCL8 ($P < 0.001$), IL-10 ($P = 0.01$), PTX3 ($P = 0.002$), IL-6 ($P = 0.06$), and VEGF ($P < 0.001$) associated with worse prognosis (Table 3), while higher levels of CCL2 ($P = 0.31$) and TNF- α ($P = 0.89$) (Table 3) did not. Further, we tested for the independency of these biomarkers. To avoid overfitting of the COX model [21, 22] because of the relatively low amount of events ($n = 9$) in our cohort, each inflammatory mediator was separately entered in a multivariate model including TNM stage or one other inflammatory mediator (data not shown). In these models, we found that among all inflammatory mediators that were significant at univariate analysis only CXCL8, CCL2 and VEGF values were independently and significantly associated with prognosis (data not shown). In detail, high levels of CXCL8, VEGF and PTX-3 (\geq ROC value) identified subgroups of CRC patients [44.4% (28/63); 42.8% (27/63); 15.8% (10/63), respectively] that efficiently detected disease recurrences [47.3% (9/19); 50.0% (9/18); 50.0% (5/5)]. Thus, according to these results we combined the levels of CXCL8, VEGF and PTX-3 (\geq ROC value of combined markers) (Table 4) and to adjust for confounders and to test its prognostic independency, we performed a Cox multivariate analysis, with respect to demographics, clinical and histopathologic features (Table 4). Cox multivariate analysis showed that higher levels of combined CXCL8, VEGF and PTX-3 (\geq ROC values) associated with worse prognosis [HR: 14.28, 95%CI (3.13–65.1), $P < 0.001$] independently of TNM staging and other variables included in this model (Table 4). Combined high cut-off of CXCL8, VEGF and PTX-3 values was present only in 11% (7/63) of CRC patients, but this subgroup efficiently identified 71.4% (5/7) of relapsing cases. Conversely, a low cut-off of combined inflammatory values of CXCL8, VEGF and PTX-3 identified a 38% (24/63) of CRC patients with 0% (0/24) of relapsing cases. Overall, the predictive value to detect disease recurrences of the combined score of CXCL8, VEGF and PTX-3 was better compared to each of their separate values (all $P \leq 0.05$).

Fig 2 shows the DSS curves of all investigated patients sub grouped by the plasma values of CXCL8, VEGF, PTX-3 (\geq ROC values) and the immune score. We found an association with worse survival among CRC patients with values of CXCL8 ($P = 0.008$), VEGF ($P = 0.001$), PTX-3 ($P = 0.005$) above the ROC threshold (\geq ROC values). The immune score represented by combined ROC values of CXCL8, VEGF and PTX-3 (low, medium, high cutoff) had the ability to predict significantly worse survival ($P < 0.001$) with a better efficiency compared to single immune mediators.

Discussion

In this study, we showed that inflammatory mediators in the blood of CRC patients collected prior to surgical resection might be candidate biomarkers to predict postsurgical progression of CRC. By characterizing an array of different cytokines we had the possibility to benchmark their prognostic relevance. We showed that CXCL-8, VEGF and the long Pentraxin 3 were the best predictors of prognosis in our CRC study. In addition, a cytokine score based on the combination of the levels of these immune mediators was independent of the conventional TNM staging in identifying post-operative disease recurrences.

The present study followed the REMARK guidelines for the assessment of prognostic tumor markers [23]. However, we acknowledge some weaknesses with the study design. First, we quantified levels of inflammatory mediators before surgery but not during follow up. However, previous studies showed that the levels of a common and unspecific systemic inflammatory

Table 3. Cytokines as predictors of post-operative disease recurrence in 63 patients with stage 0-IV CRC.

	Tumor Recurrence			COX Analysis	
	no	yes	%	H.R. (95%C.I.)	P
All cases (N)	54	9	14.3		
Cytokines values*					
IL-1					
Low	37	1	2.6	1.00 ref.	
High	17	8	32.0	11.84 (1.47–95.39)	0.01
IL-6					
Low	32	1	3.0	1.00 ref.	
High	22	8	26.7	7.20 (0.87–59.24)	0.06
CXCL8					
Low	35	0	0	1.00 ref.	
High	19	9	32.1	N.A	<0.001
IL-10					
Low	22	0	0	1.00 ref.	
High	32	9	22.0	NA	0.01
CCL2					
Low	27	2	6.9	1.00 ref	
High	27	7	20.6	2.27 (0.45–11.41)	0.31
PTX3					
Low	49	4	7.5	1.00 ref	
High	5	5	50.0	9.64 (2.24–41.42)	0.002
TNF-a					
Low	51	8	13.6	1.00 ref	
High	3	1	25.0	1.15 (0.13–10.13)	0.89
VEGF					
Low	36	0	0	1.00 ref	
High	18	9	33.3	NA	<0.001

*Low and high cutoff values for each marker defined by ROC curve analysis.

NA = not available.

doi:10.1371/journal.pone.0148186.t003

marker as CRP did not change in individuals along the years [24, 25]. In addition, we quantified baseline levels of inflammatory mediators the day before surgery and for this reason the type of surgical treatment does not represent a confounding variable as it cannot affect inflammatory mediator levels in our study. Second, we did not examine matched control healthy blood donor since this was beyond the goal of this study. Third, we acknowledge the limited amount of CRC patients included in our study might create overfitting prognostic models. However, the number of events required to test independency of biomarkers is still debated [22] and depends on the extent of the prognostic effect. The limited patient's number of our cohort rely on its prospective design and the short time span of patient's enrollment, which decrease selection biases and methodological inconsistencies usually associated with large retrospective cohorts [26]. In addition, we employed ROC curve models to generate reproducible data by measuring the specificity and sensitivity that are useful to benchmark the diagnostic ability of biomarkers across studies [14].

To our knowledge, this is the first study to address the postsurgical prognostic relevance of Pentraxin 3 in CRC. PTX3 is an immune mediator that belongs to the highly conserved family

Table 4. Predictors of post-operative disease recurrence in 63 patients with stage 0-IV CRC.

	Tumor Recurrence		COX Univariate analysis ^b		COX Multivariate analysis ^{a, b}	
	No (n = 54)	Yes (n = 9)	H.R. (95%C.I.)	P	H.R. (95%C.I.)	P
Cytokine Score*						
Low	24	0				
Medium	28	4	11.51 (3.02–43.83)	<0.001	16.21 (3.56–73.84)	<0.001
High	2	5				
Age						
< 70 yrs.	23	2				
≥ 70 yrs.	31	7	2.67 (0.55–12.96)	0.22		
Gender						
Male	26	7				
Female	28	2	0.37 (0.08–1.86)	0.23		
TNM Staging						
0-II	34	2				
III	18	4	3.06 (1.24–7.57)	0.01	3.68 (1.21–11.20)	0.02
IV	1	3				
NA	1	0				
CEA						
<5ng/ml	33	5				
≥5ng/ml	8	4	1.47 (0.30–7.33)	0.64		
NA	13	0				
Tumor Site						
Colon	44	7				
Rectum	10	2	2.18 (0.57–8.31)	0.26		

* Low and high cutoff values for each marker defined by ROC curve analysis. Low cytokines score was defined by combined lowIL-8-lowVEGF-lowPTX3 values. High score was defined by combined highIL-8-highVEGF-highPTX3 values. Intermediate score was defined by any other values.

^a Multivariate COX regression analysis.

^b Cytokine score, TNM staging, age and gender were included in the COX multivariate model. By a backward stepwise elimination approach, non-significant variables and their non-significant interactions were removed from the model.

doi:10.1371/journal.pone.0148186.t004

of pentraxins, as well as C reactive protein (CRP) [27]. It has an important role in homeostatic processes such as tissue remodeling, angiogenesis and inflammatory responses ([28], [27], [29]) and has been linked to the cancer-related inflammation [30]. In previous clinical studies, PTX3 was found to be increased in other tumors such as liposarcomas [31], glioma [32], lung [20] and prostate cancer [33] compared to paired healthy controls [20, 33] or to benign hyperplasia [33]. However, none of these studies linked PTX3 levels with postsurgical tumor relapses. In addition, our array of cytokines was useful to investigate whether immune mediators correlate with each other in the plasma of human CRC patients. The absence of covariance between Pentraxin-3 and other inflammatory mediators explain its independent impact on prognosis, and further suggests that the combined inflammatory score might increase the detection yield of postsurgical recurrences. Despite strong correlation between TNF- α and IL-1 β , these mediators associated with patient’s prognosis to a lesser extent than PTX3 levels, which suggests that these cytokines might have a lower level of involvement in the metastatic relapse of CRC comparing to PTX3. In other studies, PTX3 was shown to be highly induced by LPS/TLRs [34, 35] which can also induce the expression of CXCL8. In this context, it is important to acknowledge that higher PTX3 and CXCL8 blood levels in patients with recurrence of disease in this study

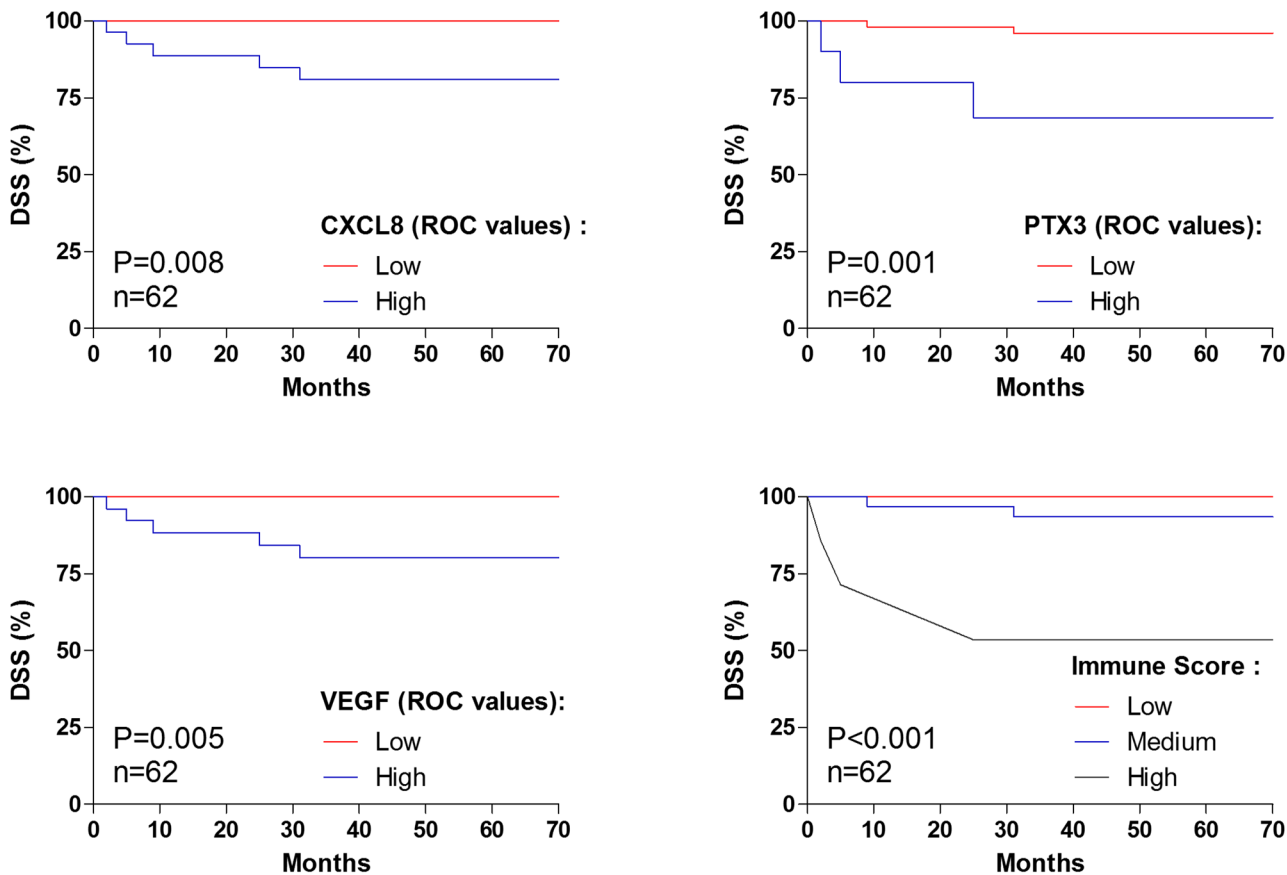


Fig 2. Kaplan—Meier curves showing disease-specific survival (DSS) after resection with curative intent for colorectal cancer according to plasma values of IL-8, PTX-3, VEGF and the immune score. The ROC threshold values of IL-8, PTX3 and VEGF were calculated in the whole cohort (6.79 pg/ml, 31.97pg/ml, 6.29pg/ml, respectively) and were used as a cutoff to select high and low IL-8, PTX-3 and VEGF in colorectal cancer patients. Low immune score was defined by combined lowIL-8-lowVEGF-lowPTX3 values. High immune score was defined by combined highIL-8-highVEGF-highPTX3 values. Intermediate score was defined by any other value. Values above the ROC cutoff were associated with worse patient’s survival for CXCL8 (P = 0.008), PTX3 (P = 0.001), VEGF (P = 0.005) and the immune score (P<0.001), compared to those below ROC cutoff.

doi:10.1371/journal.pone.0148186.g002

represent a mere phenomenological evidence of the inflammatory reaction at the tumor site. Whether these mediators support the local metastatic process and their targeting would affect CRC growth was beyond the aim of this study. Therefore, our data showing the upregulation of serum PTX3 in metastatic CRCs patients is not conflicting with previous mechanistic reports [36] and indeed provide further evidence that this mediator somehow is involved in the tumorigenic reaction.

Together with VEGF, which inhibitor is currently used as an antiangiogenic factor for the treatment of stage IV CRC, CXCL8 is also a potent promoter of angiogenesis that can promote vascularization at the tumor site, proliferation and metastasis of cancer cells and mediate recruitment of tumor infiltrating leukocytes [37–39]. Additionally, our data confirm previous findings on the prognostic abilities of circulating levels of VEGF [40, 41] and CXCL8 [42] in CRC patients demonstrating that this type of methodology is highly reproducible.

Our data suggest that the introduction of circulating inflammatory mediators for detection of post-surgical CRC progression would effectively identify individuals at high risk of recurrence independently of conventional risk predictors. CRC patients identified by high levels of inflammatory mediator plasma levels should be monitored more closely in the follow up regardless of their TNM status which would provide an additional tool in the decision-making

process for the postsurgical screening. To conclude, PTX3 and CXCL8 plasma quantification could be coupled with VEGF levels for getting the best yield of postsurgical recurrence detection from the blood samples. These findings, provide the rationale to design large scale clinical studies in order to confirm the prognostic ability of these inflammatory mediators.

Supporting Information

S1 Fig. ROC-plot analysis curves comparing patients according to their postsurgical relapse at the optimum cutoffs identified by the ROC model for all soluble immune mediators studied. ROC plot curves at optimum cutoffs for each immune mediator were calculated and tested for their ability to detect postsurgical tumor recurrences according to their sensitivity and specificity. Sensitivity and Specificity: IL-1 (0,88 and 0,68); IL-6 (0,88 and 0,59); IL-10 (1 and 0,40); TNF-a (1 and 0,05); CCL2 (0,77 and 0,5); CXCL8 (1 and 0,64); VEGF: (1 and 0,66); PTX-3: (0,55 and 0,90). ROC cut-off values: IL-1 (0,81 pg/ml), IL-6 (5,86 pg/ml), IL-10 (4,14 pg/ml), TNFa (49,72 pg/ml), CCL2 (38,03 pg/ml), CXCL8 (7,01 pg/ml), VEGF (39,03 pg/ml), PTX3 (13,68 pg/ml).
(PDF)

Acknowledgments

Giuseppe Di Caro is supported by iCare fellowship from Associazione Italiana per la ricerca sul cancro (AIRC).

Authors declare no conflict of interest.

Author Contributions

Conceived and designed the experiments: GDC AS PA. Performed the experiments: MC SP ME FM MS MM. Analyzed the data: GDC. Contributed reagents/materials/analysis tools: FM MM PA AS JT. Wrote the paper: GDC MC AS.

References

1. Torre LA, Bray F, Siegel RL, Ferlay J, Lortet-Tieulent J, Jemal A. Global cancer statistics, 2012. *CA: a cancer journal for clinicians*. 2015; 65(2):87–108. doi: [10.3322/caac.21262](https://doi.org/10.3322/caac.21262) PMID: [25651787](https://pubmed.ncbi.nlm.nih.gov/25651787/).
2. O'Connell JB, Maggard MA, Ko CY. Colon cancer survival rates with the new American Joint Committee on Cancer sixth edition staging. *Journal of the National Cancer Institute*. 2004; 96(19):1420–5. doi: [10.1093/jnci/djh275](https://doi.org/10.1093/jnci/djh275) PMID: [15467030](https://pubmed.ncbi.nlm.nih.gov/15467030/).
3. Dukes CE. The surgical pathology of rectal cancer. *American journal of surgery*. 1950; 79(1):66–71, illust; Disc, 94. PMID: [15399355](https://pubmed.ncbi.nlm.nih.gov/15399355/).
4. Mejia A, Schulz S, Hyslop T, Weinberg DS, Waldman SA. Molecular staging individualizing cancer management. *J Surg Oncol*. 2012; 105(5):468–74. doi: [10.1002/jso.21858](https://doi.org/10.1002/jso.21858) PMID: [22441898](https://pubmed.ncbi.nlm.nih.gov/22441898/); PubMed Central PMCID: PMC3312802.
5. Karin M, Greten FR. NF-kappaB: linking inflammation and immunity to cancer development and progression. *Nature reviews Immunology*. 2005; 5(10):749–59. doi: [10.1038/nri1703](https://doi.org/10.1038/nri1703) PMID: [16175180](https://pubmed.ncbi.nlm.nih.gov/16175180/).
6. Mantovani A, Allavena P, Sozzani S, Vecchi A, Locati M, Sica A. Chemokines in the recruitment and shaping of the leukocyte infiltrate of tumors. *Seminars in cancer biology*. 2004; 14(3):155–60. doi: [10.1016/j.semcancer.2003.10.001](https://doi.org/10.1016/j.semcancer.2003.10.001) PMID: [15246050](https://pubmed.ncbi.nlm.nih.gov/15246050/).
7. Karin M. Nuclear factor-kappaB in cancer development and progression. *Nature*. 2006; 441(7092):431–6. doi: [10.1038/nature04870](https://doi.org/10.1038/nature04870) PMID: [16724054](https://pubmed.ncbi.nlm.nih.gov/16724054/).
8. Mantovani A, Allavena P, Sica A, Balkwill F. Cancer-related inflammation. *Nature*. 2008; 454(7203):436–44. doi: [10.1038/nature07205](https://doi.org/10.1038/nature07205) PMID: [18650914](https://pubmed.ncbi.nlm.nih.gov/18650914/).
9. Hanahan D, Weinberg RA. Hallmarks of cancer: the next generation. *Cell*. 2011; 144(5):646–74. doi: [10.1016/j.cell.2011.02.013](https://doi.org/10.1016/j.cell.2011.02.013) PMID: [21376230](https://pubmed.ncbi.nlm.nih.gov/21376230/).
10. Grivnennikov S, Karin E, Terzic J, Mucida D, Yu GY, Vallabhapurapu S, et al. IL-6 and Stat3 are required for survival of intestinal epithelial cells and development of colitis-associated cancer. *Cancer cell*. 2009;

15(2):103–13. doi: [10.1016/j.ccr.2009.01.001](https://doi.org/10.1016/j.ccr.2009.01.001) PMID: [19185845](https://pubmed.ncbi.nlm.nih.gov/19185845/); PubMed Central PMCID: [PMC2667107](https://pubmed.ncbi.nlm.nih.gov/PMC2667107/).

11. Sasaki Y, Takeda H, Sato T, Orii T, Nishise S, Nagino K, et al. Serum Interleukin-6, insulin, and HOMA-IR in male individuals with colorectal adenoma. *Clinical cancer research: an official journal of the American Association for Cancer Research*. 2012; 18(2):392–9. doi: [10.1158/1078-0432.CCR-11-0896](https://doi.org/10.1158/1078-0432.CCR-11-0896) PMID: [22048241](https://pubmed.ncbi.nlm.nih.gov/22048241/).
12. Chan AT, Ogino S, Giovannucci EL, Fuchs CS. Inflammatory markers are associated with risk of colorectal cancer and chemopreventive response to anti-inflammatory drugs. *Gastroenterology*. 2011; 140(3):799–808, quiz.e11. doi: [10.1053/j.gastro.2010.11.041](https://doi.org/10.1053/j.gastro.2010.11.041) PMID: [21115010](https://pubmed.ncbi.nlm.nih.gov/21115010/); PubMed Central PMCID: [PMC3049858](https://pubmed.ncbi.nlm.nih.gov/PMC3049858/).
13. Song M, Wu K, Ogino S, Fuchs CS, Giovannucci EL, Chan AT. A prospective study of plasma inflammatory markers and risk of colorectal cancer in men. *British journal of cancer*. 2013; 108(9):1891–8. doi: [10.1038/bjc.2013.172](https://doi.org/10.1038/bjc.2013.172) PMID: [23591192](https://pubmed.ncbi.nlm.nih.gov/23591192/); PubMed Central PMCID: [PMC3658520](https://pubmed.ncbi.nlm.nih.gov/PMC3658520/).
14. Di Caro G, Marchesi F, Galdiero MR, Grizzi F. Immune mediators as potential diagnostic tools for colorectal cancer: from experimental rationale to early clinical evidence. Expert review of molecular diagnostics. 2014; 14(3):387–99. doi: [10.1586/14737159.2014.900443](https://doi.org/10.1586/14737159.2014.900443) PMID: [24649823](https://pubmed.ncbi.nlm.nih.gov/24649823/).
15. Belluco C, Nitti D, Frantz M, Toppan P, Basso D, Plebani M, et al. Interleukin-6 blood level is associated with circulating carcinoembryonic antigen and prognosis in patients with colorectal cancer. *Annals of surgical oncology*. 2000; 7(2):133–8. PMID: [10761792](https://pubmed.ncbi.nlm.nih.gov/10761792/).
16. Toiyama Y, Fujikawa H, Kawamura M, Matsushita K, Saigusa S, Tanaka K, et al. Evaluation of CXCL10 as a novel serum marker for predicting liver metastasis and prognosis in colorectal cancer. *International journal of oncology*. 2012; 40(2):560–6. doi: [10.3892/ijo.2011.1247](https://doi.org/10.3892/ijo.2011.1247) PMID: [22038159](https://pubmed.ncbi.nlm.nih.gov/22038159/).
17. Chen ZY, He WZ, Peng LX, Jia WH, Guo RP, Xia LP, et al. A prognostic classifier consisting of 17 circulating cytokines is a novel predictor of overall survival for metastatic colorectal cancer patients. *International journal of cancer Journal international du cancer*. 2015; 136(3):584–92. doi: [10.1002/ijc.29017](https://doi.org/10.1002/ijc.29017) PMID: [24916890](https://pubmed.ncbi.nlm.nih.gov/24916890/).
18. Ibrahim JG, Chu H, Chen MH. Missing data in clinical studies: issues and methods. *Journal of clinical oncology: official journal of the American Society of Clinical Oncology*. 2012; 30(26):3297–303. doi: [10.1200/JCO.2011.38.7589](https://doi.org/10.1200/JCO.2011.38.7589) PMID: [22649133](https://pubmed.ncbi.nlm.nih.gov/22649133/); PubMed Central PMCID: [PMC3948388](https://pubmed.ncbi.nlm.nih.gov/PMC3948388/).
19. Muller B, Peri G, Doni A, Torri V, Landmann R, Bottazzi B, et al. Circulating levels of the long pentraxin PTX3 correlate with severity of infection in critically ill patients. *Critical care medicine*. 2001; 29(7):1404–7. PMID: [11445697](https://pubmed.ncbi.nlm.nih.gov/11445697/).
20. Diamandis EP, Goodglick L, Planque C, Thornquist MD. Pentraxin-3 is a novel biomarker of lung carcinoma. *Clinical cancer research: an official journal of the American Association for Cancer Research*. 2011; 17(8):2395–9. doi: [10.1158/1078-0432.CCR-10-3024](https://doi.org/10.1158/1078-0432.CCR-10-3024) PMID: [21257721](https://pubmed.ncbi.nlm.nih.gov/21257721/).
21. Austin PC, Steyerberg EW. The number of subjects per variable required in linear regression analyses. *Journal of clinical epidemiology*. 2015; 68(6):627–36. doi: [10.1016/j.jclinepi.2014.12.014](https://doi.org/10.1016/j.jclinepi.2014.12.014) PMID: [25704724](https://pubmed.ncbi.nlm.nih.gov/25704724/).
22. Vittinghoff E, McCulloch CE. Relaxing the rule of ten events per variable in logistic and Cox regression. *American journal of epidemiology*. 2007; 165(6):710–8. doi: [10.1093/aje/kwk052](https://doi.org/10.1093/aje/kwk052) PMID: [17182981](https://pubmed.ncbi.nlm.nih.gov/17182981/).
23. Altman DG, McShane LM, Sauerbrei W, Taube SE. Reporting Recommendations for Tumor Marker Prognostic Studies (REMARK): explanation and elaboration. *PLoS medicine*. 2012; 9(5):e1001216. doi: [10.1371/journal.pmed.1001216](https://doi.org/10.1371/journal.pmed.1001216) PMID: [22675273](https://pubmed.ncbi.nlm.nih.gov/22675273/); PubMed Central PMCID: [PMC3362085](https://pubmed.ncbi.nlm.nih.gov/PMC3362085/).
24. Allin KH, Nordestgaard BG, Zacho J, Tybjaerg-Hansen A, Bojesen SE. C-reactive protein and the risk of cancer: a mendelian randomization study. *Journal of the National Cancer Institute*. 2010; 102(3):202–6. doi: [10.1093/jnci/djp459](https://doi.org/10.1093/jnci/djp459) PMID: [20056955](https://pubmed.ncbi.nlm.nih.gov/20056955/).
25. Platz EA, Sutcliffe S, De Marzo AM, Drake CG, Rifai N, Hsing AW, et al. Intra-individual variation in serum C-reactive protein over 4 years: an implication for epidemiologic studies. *Cancer causes & control: CCC*. 2010; 21(6):847–51. doi: [10.1007/s10552-010-9511-z](https://doi.org/10.1007/s10552-010-9511-z) PMID: [20135215](https://pubmed.ncbi.nlm.nih.gov/20135215/); PubMed Central PMCID: [PMC3010861](https://pubmed.ncbi.nlm.nih.gov/PMC3010861/).
26. Ogino S, Galon J, Fuchs CS, Dranoff G. Cancer immunology—analysis of host and tumor factors for personalized medicine. *Nature reviews Clinical oncology*. 2011; 8(12):711–9. doi: [10.1038/nrclinonc.2011.122](https://doi.org/10.1038/nrclinonc.2011.122) PMID: [21826083](https://pubmed.ncbi.nlm.nih.gov/21826083/); PubMed Central PMCID: [PMC3227751](https://pubmed.ncbi.nlm.nih.gov/PMC3227751/).
27. Garlanda C, Bottazzi B, Bastone A, Mantovani A. Pentraxins at the crossroads between innate immunity, inflammation, matrix deposition, and female fertility. *Annual review of immunology*. 2005; 23:337–66. doi: [10.1146/annurev.immunol.23.021704.115756](https://doi.org/10.1146/annurev.immunol.23.021704.115756) PMID: [15771574](https://pubmed.ncbi.nlm.nih.gov/15771574/).
28. Bottazzi B, Doni A, Garlanda C, Mantovani A. An integrated view of humoral innate immunity: pentraxins as a paradigm. *Annual review of immunology*. 2010; 28:157–83. doi: [10.1146/annurev-immunol-030409-101305](https://doi.org/10.1146/annurev-immunol-030409-101305) PMID: [19968561](https://pubmed.ncbi.nlm.nih.gov/19968561/).

29. Deban L, Russo RC, Sironi M, Moalli F, Scanziani M, Zambelli V, et al. Regulation of leukocyte recruitment by the long pentraxin PTX3. *Nature immunology*. 2010; 11(4):328–34. doi: [10.1038/ni.1854](https://doi.org/10.1038/ni.1854) PMID: [20208538](https://pubmed.ncbi.nlm.nih.gov/20208538/).
30. Germano G, Frapolli R, Simone M, Tavecchio M, Erba E, Pesce S, et al. Antitumor and anti-inflammatory effects of trabectedin on human myxoid liposarcoma cells. *Cancer research*. 2010; 70(6):2235–44. doi: [10.1158/0008-5472.CAN-09-2335](https://doi.org/10.1158/0008-5472.CAN-09-2335) PMID: [20215499](https://pubmed.ncbi.nlm.nih.gov/20215499/).
31. Willeke F, Assad A, Findeisen P, Schromm E, Grobholz R, von Gerstenbergk B, et al. Overexpression of a member of the pentraxin family (PTX3) in human soft tissue liposarcoma. *European journal of cancer*. 2006; 42(15):2639–46. doi: [10.1016/j.ejca.2006.05.035](https://doi.org/10.1016/j.ejca.2006.05.035) PMID: [16959485](https://pubmed.ncbi.nlm.nih.gov/16959485/).
32. Locatelli M, Ferrero S, Martinelli Boneschi F, Boiocchi L, Zavanone M, Maria Gaini S, et al. The long pentraxin PTX3 as a correlate of cancer-related inflammation and prognosis of malignancy in gliomas. *Journal of neuroimmunology*. 2013; 260(1–2):99–106. doi: [10.1016/j.jneuroim.2013.04.009](https://doi.org/10.1016/j.jneuroim.2013.04.009) PMID: [23664694](https://pubmed.ncbi.nlm.nih.gov/23664694/).
33. Stallone G, Cormio L, Netti GS, Infante B, Selvaggio O, Fino GD, et al. Pentraxin 3: a novel biomarker for predicting progression from prostatic inflammation to prostate cancer. *Cancer research*. 2014; 74(16):4230–8. doi: [10.1158/0008-5472.CAN-14-0369](https://doi.org/10.1158/0008-5472.CAN-14-0369) PMID: [24950910](https://pubmed.ncbi.nlm.nih.gov/24950910/).
34. Doni A, Peri G, Chieppa M, Allavena P, Pasqualini F, Vago L, et al. Production of the soluble pattern recognition receptor PTX3 by myeloid, but not plasmacytoid, dendritic cells. *European journal of immunology*. 2003; 33(10):2886–93. doi: [10.1002/eji.200324390](https://doi.org/10.1002/eji.200324390) PMID: [14515272](https://pubmed.ncbi.nlm.nih.gov/14515272/).
35. Jeon H, Lee S, Lee WH, Suk K. Analysis of glial secretome: the long pentraxin PTX3 modulates phagocytic activity of microglia. *Journal of neuroimmunology*. 2010; 229(1–2):63–72. doi: [10.1016/j.jneuroim.2010.07.001](https://doi.org/10.1016/j.jneuroim.2010.07.001) PMID: [20674043](https://pubmed.ncbi.nlm.nih.gov/20674043/).
36. Bonavita E, Gentile S, Rubino M, Maina V, Papait R, Kunderfranco P, et al. PTX3 is an extrinsic onco-suppressor regulating complement-dependent inflammation in cancer. *Cell*. 2015; 160(4):700–14. doi: [10.1016/j.cell.2015.01.004](https://doi.org/10.1016/j.cell.2015.01.004) PMID: [25679762](https://pubmed.ncbi.nlm.nih.gov/25679762/).
37. Waugh DJ, Wilson C. The interleukin-8 pathway in cancer. *Clinical cancer research: an official journal of the American Association for Cancer Research*. 2008; 14(21):6735–41. doi: [10.1158/1078-0432.CCR-07-4843](https://doi.org/10.1158/1078-0432.CCR-07-4843) PMID: [18980965](https://pubmed.ncbi.nlm.nih.gov/18980965/).
38. Strieter RM. Chemokines: not just leukocyte chemoattractants in the promotion of cancer. *Nature immunology*. 2001; 2(4):285–6. doi: [10.1038/86286](https://doi.org/10.1038/86286) PMID: [11276195](https://pubmed.ncbi.nlm.nih.gov/11276195/).
39. Noonan DM, De Lerma Barbaro A, Vannini N, Mortara L, Albin A. Inflammation, inflammatory cells and angiogenesis: decisions and indecisions. *Cancer metastasis reviews*. 2008; 27(1):31–40. doi: [10.1007/s10555-007-9108-5](https://doi.org/10.1007/s10555-007-9108-5) PMID: [18087678](https://pubmed.ncbi.nlm.nih.gov/18087678/).
40. De Vita F, Orditura M, Lieto E, Infusino S, Morgillo F, Martinelli E, et al. Elevated perioperative serum vascular endothelial growth factor levels in patients with colon carcinoma. *Cancer*. 2004; 100(2):270–8. doi: [10.1002/cncr.11911](https://doi.org/10.1002/cncr.11911) PMID: [14716760](https://pubmed.ncbi.nlm.nih.gov/14716760/).
41. Werther K, Christensen IJ, Nielsen HJ, Danish RCCSG. The association between preoperative concentration of soluble vascular endothelial growth factor, perioperative blood transfusion, and survival in patients with primary colorectal cancer. *The European journal of surgery = Acta chirurgica*. 2001; 167(4):287–92. PMID: [11354321](https://pubmed.ncbi.nlm.nih.gov/11354321/).
42. Hamilton TD, Leugner D, Kopciuk K, Dixon E, Sutherland FR, Bathe OF. Identification of prognostic inflammatory factors in colorectal liver metastases. *BMC cancer*. 2014; 14:542. doi: [10.1186/1471-2407-14-542](https://doi.org/10.1186/1471-2407-14-542) PMID: [25069793](https://pubmed.ncbi.nlm.nih.gov/25069793/); PubMed Central PMCID: [PMC4125702](https://pubmed.ncbi.nlm.nih.gov/PMC4125702/).